

## New Features in RightOn 2.0

Many users of RightOn 0.1 called and wrote with suggestions for improvement. The following are a few of their comments which have made it into RightOn 2.0:

- \* Full [support for the middle mouse button](#) (if you have one).
- \* A whole [new 3-D look](#) for the dialog boxes and controls.
- \* New event type: [Left mouse double clicks!](#) If you don't like double-clicking the left mouse button, you can set up the middle or right button to send left mouse double clicks.
- \* Ability to [modify keystrokes](#) sent to applications with any combination of Alt, Ctrl, and Shift. For example, here are a few of the possible keystroke combinations you can set up the right (or middle) mouse button to send:  
Alt-Enter (to display Properties of a file), or,  
Ctrl-Escape (to bring up the Windows Task Manager)
- \* The [displayed icon changes](#) based on the state of the program. If the program is on, the normal icon is displayed, and if the program has been turned off, the icon appears "grayed" out. This feature allows you just to look at the icon to determine whether the program is on or off, without having to open up the system menu.
- \* The ability to [setup the configuration](#) and the excluded applications list [independently](#) for the right and middle buttons.
- \* Bug fix from version 0.1: if there were no applications specifically listed in the Exclude dialog box, RightOn was behaving as if *all* applications were excluded.

[Special thanks to](#)

[Other Suggestions](#) which didn't make this version

[Installing RightOn](#)

[Return to main index.](#)

## **Special Thanks**

Several people were helpful in either making suggestions for improvement or in providing insight into how to accomplish those improvements. They are, in no particular order,

Stanley Mitchell

Stephen Doyle

Jeffrey Richter

Mike White

Roy Marcum

Heath I. Hunnicutt

Shashank Kumar

**Suggestions not Implemented this version**

- \* Ability to make the icon disappear.
- \* Support of Windows 3.0

## Using RightOn



RightOn is a Windows 3.1 utility which allows you to program the right and middle buttons of your mouse to send virtually any keystroke to the window the mouse is in. You might set up the right button to send the Return key, to dialog boxes which appear on the screen, or configure your middle mouse button to send left-mouse double clicks. Throw in the ability to modify the simulated keystrokes with any combination of the Shift, Alt and Control keys, and you've got a configurable, personalized power tool at your fingertips!

### [What's New in RightOn 2.0?](#)

[Installation](#)

[Running RightOn](#)

[Setup](#)

[Exclude](#)

[About](#)

[System Requirements](#)

[How to contact the author](#)

[Motivation](#)

**CTL3D.DLL**

This is a dynamic link library which provides the three-dimensional look to the dialog boxes, and is an emerging standard. Microsoft recommends that it be installed in the \WINDOWS\SYSTEM directory, where it would be available to all applications on your machine.

RightOn will still run if this file is in the same directory as the RightOn executable, so you do not have to copy this library to the \WINDOWS\SYSTEM directory, but as more applications use this library, it becomes inefficient to have multiple copies on your disk.

## Installing RightOn

Installation of RightOn 2.0 is still easy, but there are a few things to look out for. The following assumptions are made:

- \* You received RightOn in a compressed .zip file.
  - \* Your Windows 3.1 directory is C:\WINDOWS
  - \* You will be installing RightOn 2.0 into its own directory, C:\RIGHTON.
1. Create a new directory on your hard disk, for example C:\RIGHTON, and either unzip the distribution file there, or move the files from whatever directory you unzipped them to the C:\RIGHTON directory.
  2. One of the files, CTL3D.DLL, should be copied to your \WINDOWS\SYSTEM directory. You can accomplish this from the DOS prompt by typing the following commands:

```
cd C:\RIGHTON
copy CTL3D.DLL \WINDOWS\SYSTEM\CTL3D.DLL
dir \WINDOWS\SYSTEM\CTL3D.DLL
```

### Creating a RightOn group in the Program manager (optional)

- 3.a) Now bring up the Program manager. From the File menu, select New. A dialog box will appear asking if you would like to create a new Program Group or a new Program Item: select Program Group, and press the OK button.
- 3.b) In the Program Group Properties dialog, enter "RightOn 2.0" for the Description field, and press the OK button. You may leave the Group File field blank. A new program group will be created.
- 3.c) You should now be in the (empty) RightOn group in the Program Manager. From the File menu, again select New. This time, however, choose Program Item.
- 3.d) For the Description field, enter "RightOn 2.0", and in the Command Line field, enter "C:\RIGHTON\RIGHTON.EXE". You may fill in the other fields if you like.

### Creating a RightOn entry in the Program Manager StartUp group (optional but recommended)

When you have an icon appearing in the StartUp group of the Program Manager, it is automatically loaded when Windows is started. If you would like RightOn to be automatically installed for all your Windows sessions, do the following:

- 4.a) Go into the Program Manager, and bring up the StartUp Group. You may either create a new program item by using the same method as above in 3.c) and 3.d), or you can just do a shortcut copy by holding down the Control key and dragging the icon in the RightOn group over to the StartUp group.

[Running RightOn](#)

[Return to main index.](#)



## Running RightOn

RightOn can be launched several ways.

1. In File Manager, go to the directory where RightOn has been installed (for example, c:\righton) and double click the left mouse button on the file "righton.exe."
2. In Program Manager, select Run from the File menu. A dialog box will appear, and in the box marked Command Line, enter C:\RIGHTON\righton.exe, and hit the OK button.
3. See the help available in [Installing RightOn](#) about making RightOn part of the Program Manager's StartUp group. This way, RightOn will automatically be loaded when Windows starts without you having to do anything. **This is the recommended solution.**

When RightOn is running, it appears as an icon at the bottom of the screen. RightOn cannot be restored from its iconic state, nor can it be maximized or hidden.

Go back to [Installing RightOn](#)

[Setup](#)

[Return to main index.](#)

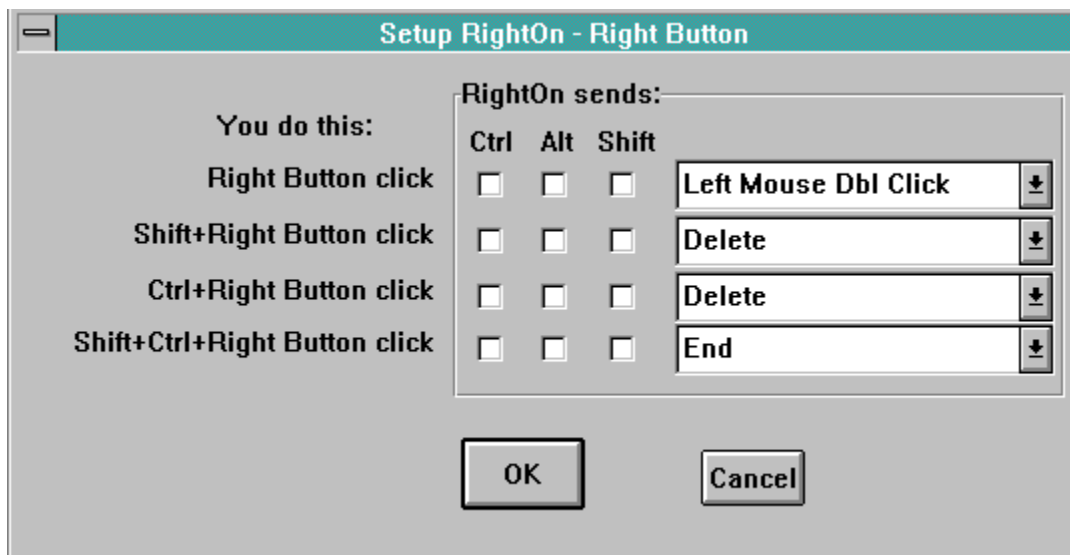


## Setup RightOn

The [Setup](#) dialog box, which is used for configuring both the right and middle mouse buttons is accessed from the System menu by selecting either Setup Right Button or Setup Middle Button.

The Setup dialog box is where you can tell RightOn which keys you want it to send to the target window when the right or middle mouse button is clicked.

Below is the dialog box for setting up the Right mouse button. [Click your mouse on the picture of the dialog box below](#) for more information on the various parts of the Setup [Right or Middle] Button dialog box.



How to [Exclude](#) Applications  
[Return to main index.](#)

## **Modifiers**

For each simulated keystroke that RightOn sends, you can turn on any combination of "modifier" keys. This means that instead of just sending an Enter key to a dialog box, you can now send Alt-Enter, for example, which has special meaning in Windows.

## **Configuring RightOn**

These four combo boxes are where you tell RightOn what keystroke you want it to send when the right (or middle) mouse button is pressed and released.

At any given time this gives you four possible keystrokes options in response to your mouse event, depending whether you are also holding any combination of the Shift or Control keys.

**OK Button**

The OK button signifies that everything in the dialog box is to your liking, and you want RightOn to continue with the configuration selected. If you exit the program after selecting OK, then the configuration will get saved and recalled the next time that RightOn is run.

**Cancel Button**

The Cancel button tells RightOn to disregard any changes made during the time the dialog box was displayed.

## Exclude

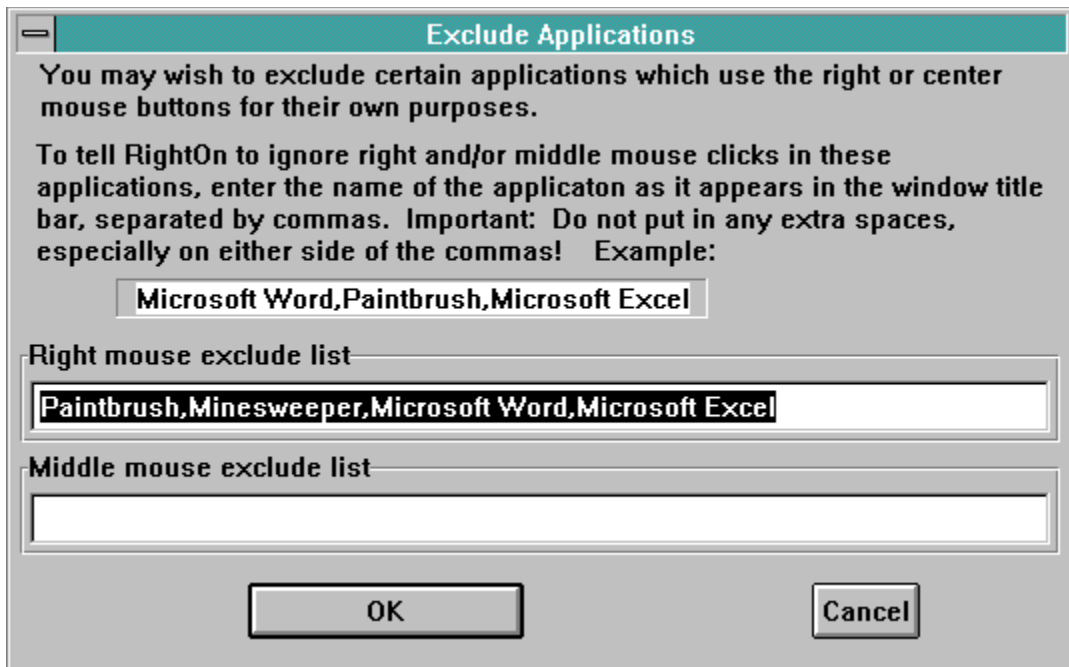
It is not always desired to have RightOn sending keystrokes to applications which themselves use the right or middle mouse button. For example, the Paintbrush application which comes with Windows uses the right mouse button to select background colors. Some word processors and spreadsheet programs use the right mouse button to pop up a menu. It is less common that applications will be using the middle mouse button.

In general, it is not desirable to program RightOn to send a keystroke to the program, when the program itself is looking for a right (or middle) mouse button click. In some cases this conflict can lead to a program or system crash.

To tell RightOn not to send the programmed keystrokes to a particular application, bring up the [Exclude](#) dialog box by selecting Exclude... menu item from the System menu. In the edit box for the right and/or middle buttons, enter the name of applications as they appear in the title bar of the window, separated by commas.

When specifying more than one application separated by commas, make sure that there are no extra spaces on either side of the comma! **Extra spaces can confuse RightOn** - you might think you are excluding an application when in fact you are not, and if the application is processing right mouse button clicks, the conflict could cause a program or system crash!

[Click the mouse on various items in the dialog box below](#) for more specific information on each of the elements.



[About dialog box](#)  
[Return to main index.](#)



### **Middle Button Exclude List**

This textbox is where you specify which applications you want RightOn to *leave alone* when you press the Middle mouse button. You would do this if an application you frequently use already uses the Middle mouse button for its own purposes.

Since it is possible to set up the exclude list for the right and middle buttons independently, and most applications do not use the middle mouse button, you may not need to enter anything in this textbox.



### **Right Button Exclude List**

This textbox is where you specify which applications you want RightOn to *leave alone* when you press the Right mouse button. You would do this if an application you frequently use already uses the Right mouse button for its own purposes.

## About

Selecting About... from the system menu brings up the [About](#) dialog box, with the usual icon, OK button, and whom to give the credit (or blame!).



[System Requirements](#)  
[Return to main index.](#)

## **System Requirements**

Simple. You must have a two- or three-button mouse and Windows 3.1 or better.

That's it.

Windows 3.0?      No.

Any questions?

Good!

Seriously, Windows 3.1 or later is required because there are calls to Windows functions which did not exist in versions of Windows prior to 3.1.

[How to contact the author](#)

[Return to main index.](#)

## How to contact the author

If you have any comments, problems (related to the program only, please!), and most important, *any suggestions for improvement*, please contact the author!



Steve McCarthy  
6707 39th SW  
Seattle, WA 98136 USA



(206) 932-3351

[Motivation](#)

[Return to main index.](#)

## Motivation

There was a great shareware program called "Whiskers" which does this same kind of thing. I found it in the disks accompanying Brian Livingston's book *Windows 3.1 Secrets*, and liked it so much that I sent in the \$15 registration fee. After waiting what seemed an eternity, I got a call from them explaining that the company had been bought out, and would I like to purchase the new, upgraded, price-tripled "Pro" version of Whiskers for \$55?

I explained that I just wanted the shareware version I was attempting to register, and could they just register me for the older, and far less expensive, version? "No dice," they said. "Send my check back." Right then I vowed that my goal in life would be to provide this great functionality at a reasonable price.

Who says **necessity** is the mother of all invention? I say **spite** ranks right up there!

[Return to main index.](#)

